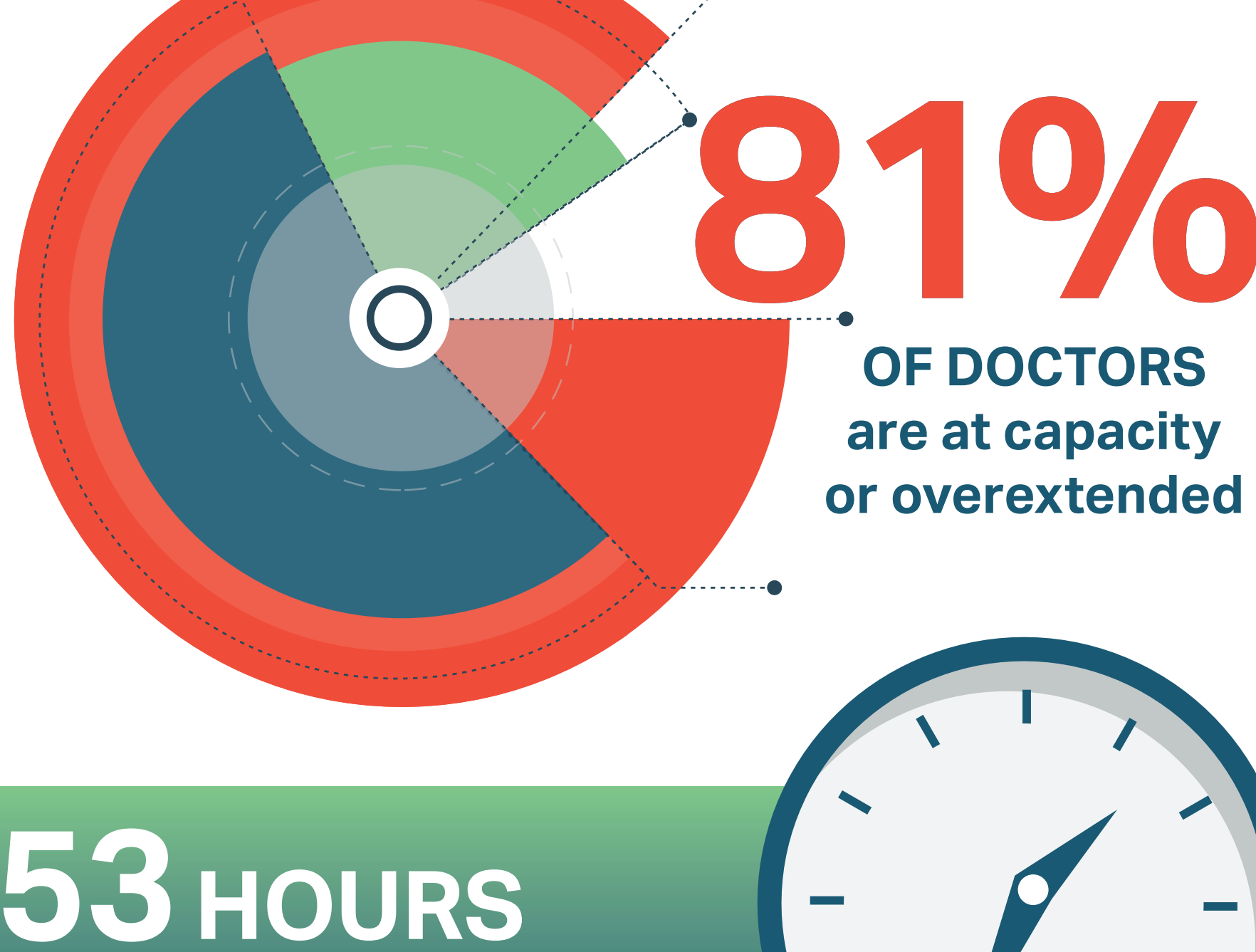
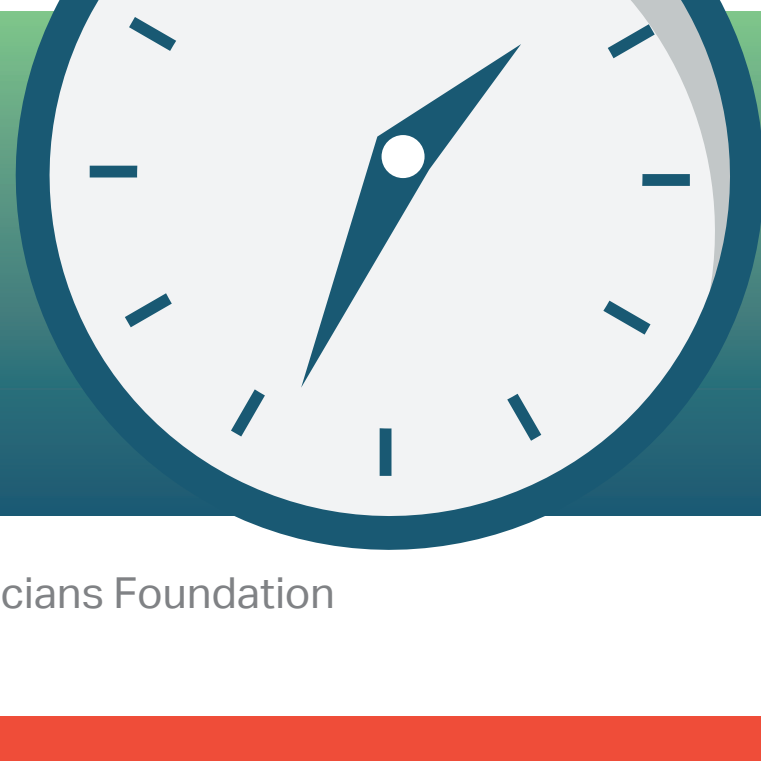


PRACTICE ENVIRONMENT



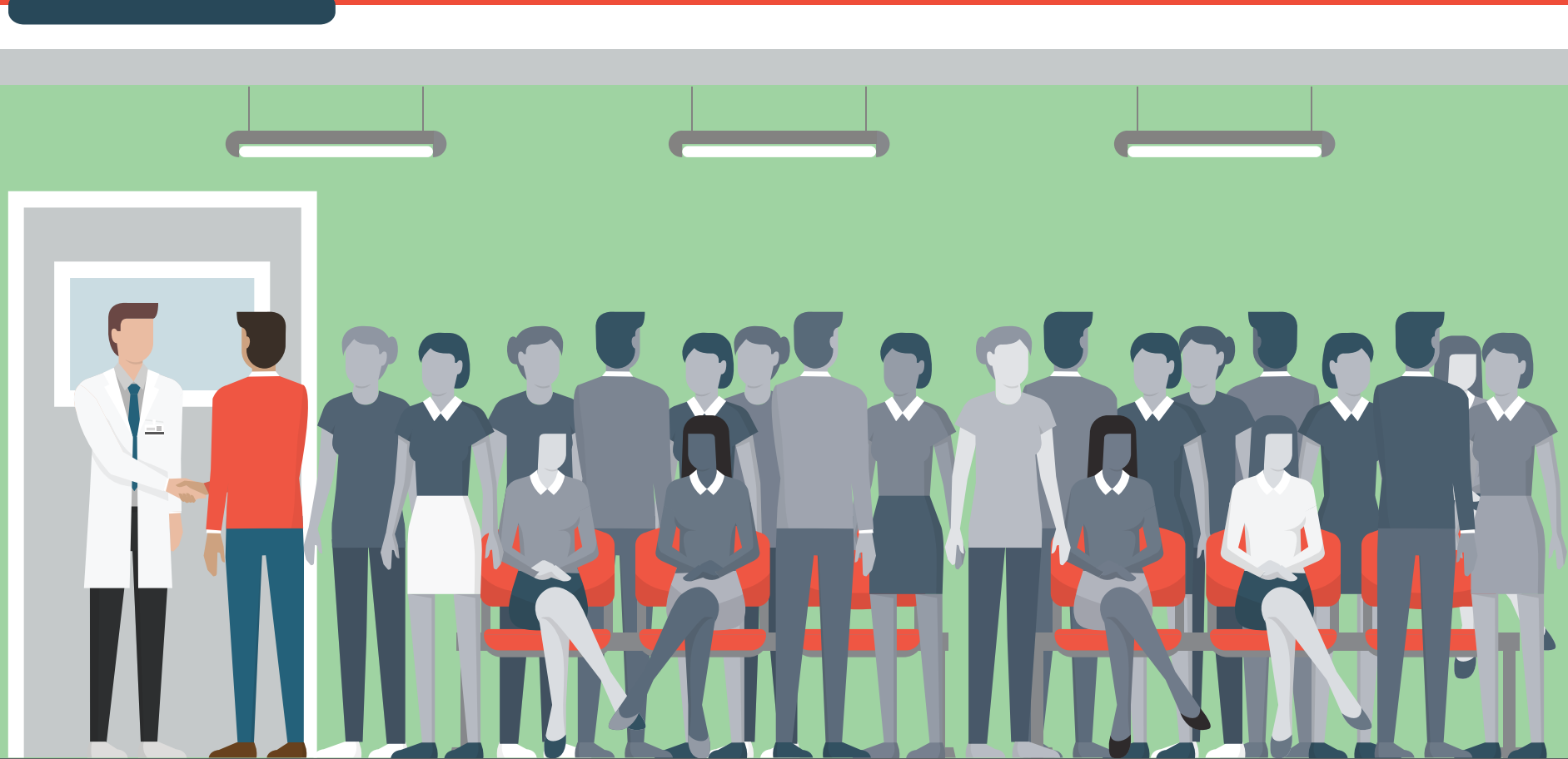
53 HOURS
is an average workweek
for physicians.



Source: 2014 Survey of America's Physicians by Physicians Foundation



9-12 hours
average number
worked per day.



22 patients
mean number of patients
seen per day.

Source: 2014 Survey of America's Physicians by Physicians Foundation



mean time spent
with each
patient

mean # of patients
seen during
rounds



mean # performed
in OR on a
surgery day

Source: Jackson Healthcare Survey of 1,527 Physicians between 4/18/14-6/5/14



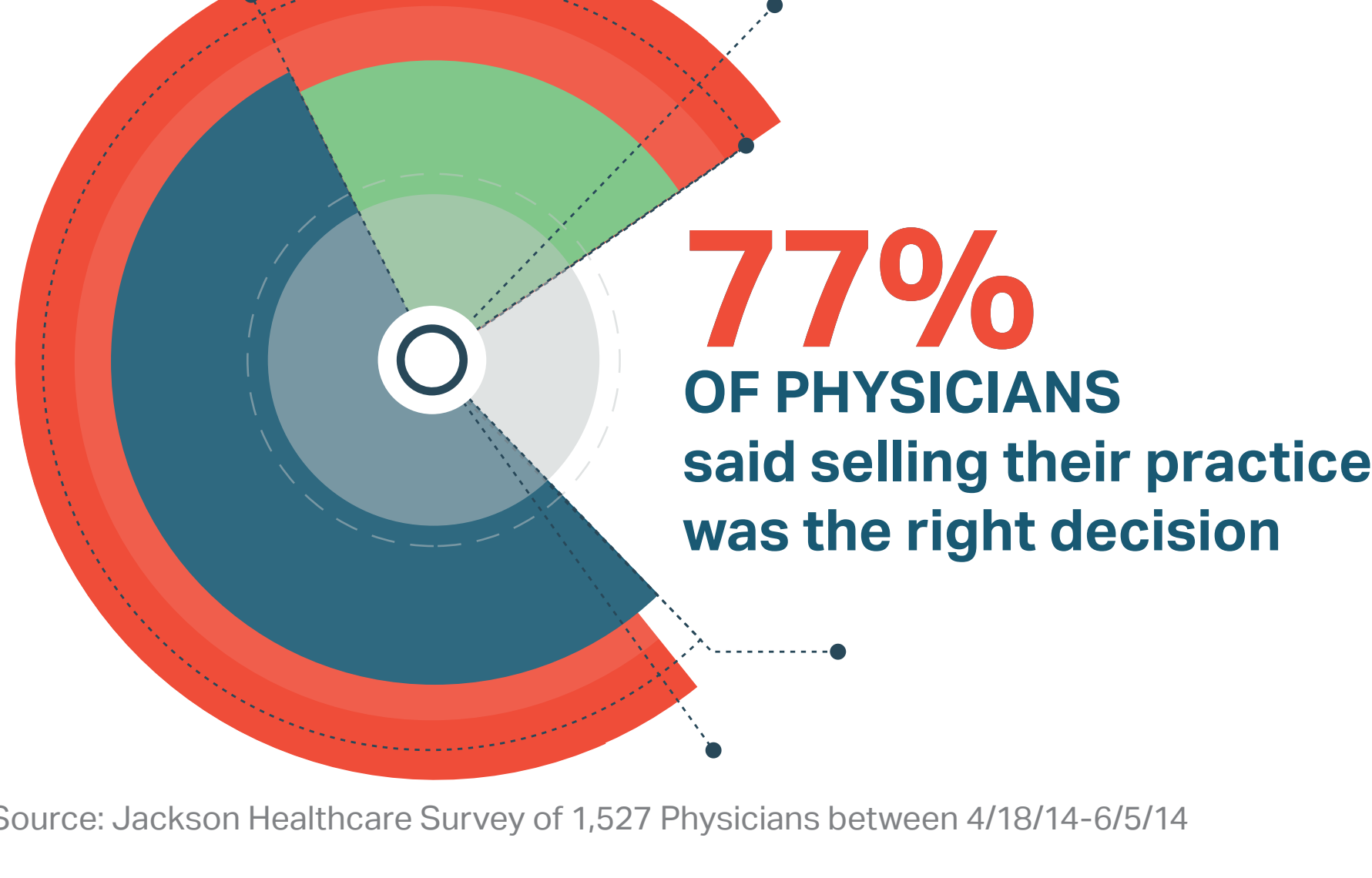
Physicians
initiate the majority of
aquisitions talks.

Primary Care

practices make up the majority of
aquisitions by hospitals.



Source: Jackson Healthcare Physician Acquisition Survey (June 2015)



Source: Jackson Healthcare Survey of 1,527 Physicians between 4/18/14-6/5/14

Employed **physicians younger than 45** are more likely to have
never been in private practice.

Source: Jackson Healthcare 2015 Employment Survey

92%



of Residents

would prefer employment with a salary rather
than an independent practice income.

Five advantages **of employment**

71%

Elimination of concerns about
practice's financial viability

43%

Less administrative work

42%

Less stress

40%

Ability to take time off

37%

Stability/security

Source: Jackson Healthcare Survey of 1,527 Physicians between 4/18/14-6/5/14



In the past decade, the percentage of
**hospital-owned physician
practices has tripled** from about
25% in 2002 to almost 75% in 2011.

Source: Physician Compensation and Production Survey,
Medical Group Management Association, 2011 Survey

For more information, contact us at
jacksonphysiciansearch.com/contact